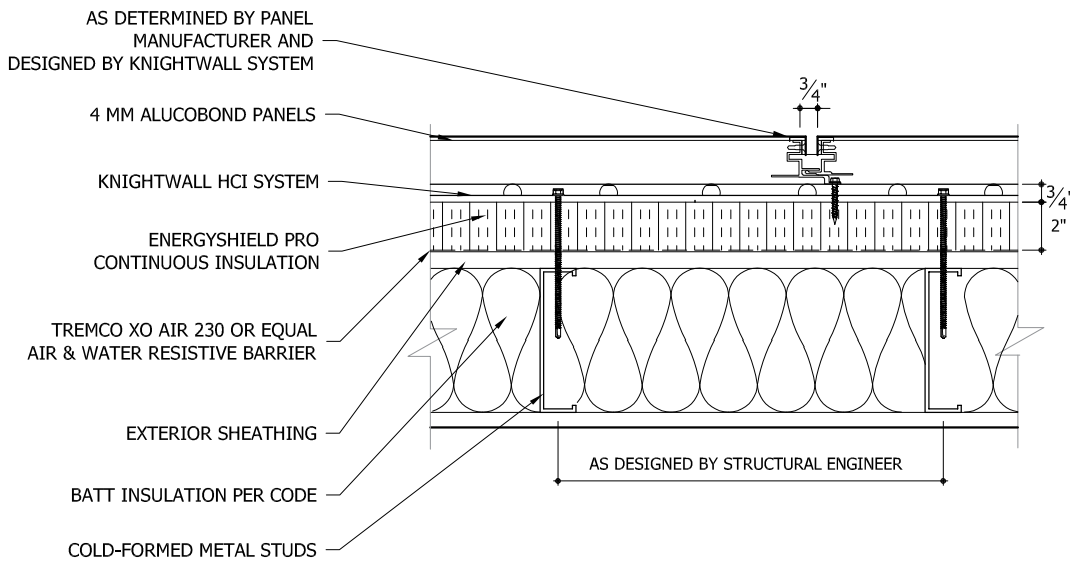


ALUCOBOND CLADDING SYSTEM - WALL ASSEMBLY-SECTION

SCALE: 1-1/2" = 1'-0"



ALUCOBOND CLADDING SYSTEM - WALL ASSEMBLY- PLAN

SCALE: 1-1/2" = 1'-0"

NOTES:

MAXIMUM OF 3-INCH SYSTEM DEPTH WHEN NFPA 285 COMPLIANCE IS REQUIRED.



TITLE:
ALUCOBOND CLADDING SYSTEM
ON METAL STUD BACKUP



Engineered For EXCELLENCE

OFFICE:
800-836-7663
sales@engineeredsys.com
EngineeredSys.com

SEPT 2023

AC-1

REFERENCE DETAILS ARE FOR INFORMATIONAL PURPOSES ONLY